



FLS Accommodation Check-In and Check-Out Policy Policy

We strongly recommend students use our transfer service. Students that use the FLS transfer service will be checked in upon arrival as part of this service. If students choose not to use our transfer service:

For apartment and dormitory, students must check-in at the FLS office during regular business hours. Check-in will not be available in the evening or on weekends. Students checking-in on Friday will be charged two extra nights of accommodation. If arriving on a Sunday, student will not be able to check-in and will forfeit payment of first night.

For homestay, students are responsible for communicating their arrival time with the host family. Students should arrive between 2-9 PM. For students that use our transfer service, FLS will communicate and arrange the arrival and check-in with the host family.

Students are expected to leave their housing by noon on the day after their program ends. Students who request to leave housing after noon on Saturday should note that such requests are not guaranteed, and if granted will incur an additional housing charge.



FLS Saddleback Homestay



FLS Citrus Homestay



FLS LVI Homestay



FLS Citrus Apartment

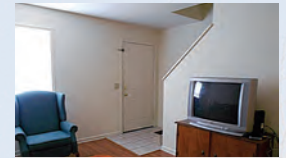


FLS Boston Homestay

Sample Housing Photos



FLS Saddleback Apartment



FLS TTU Apartment



FLSTTU Dormitory



FLS Chestnut Hill Homestay



FLS Chestnut Hill Dormitory



FLS Boston Dormitory