



LEVELUP
ENGLISH

Student Course & Lifestyle Guide



**Take your English
to the next level!**



LEVELUP
E N G L I S H

About Level Up English

The founders and teachers at Level Up English have all studied foreign languages and believe that learning another language is one of the great joys of life. We run a school, which is like a community of learners. We have interactive and fun classes that focus on grammar, vocabulary, speaking, listening, reading and writing equally. Then after class we all go out to language and cultural events in Melbourne where we can practice the new English we have learnt. We are very connected to Australians who are learning languages and want to connect learners from many countries together.

www.levelupenglish.com.au
info@levelupenglish.com.au



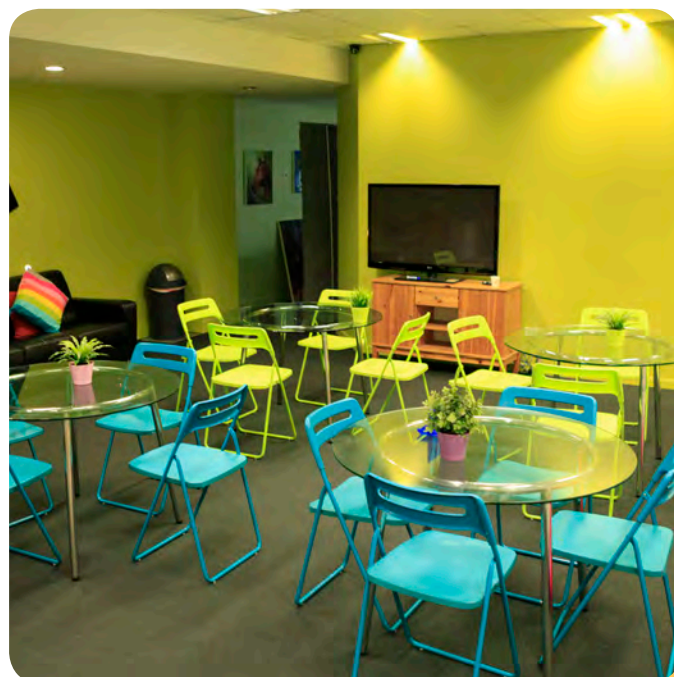
Modern classrooms



High Quality Teachers



Excursions to
tourist attractions
every week



Relaxing
Student Lounge



Take your
classes in
the morning
or afternoon



Make friends
from all over
the world

Meet local Australians learning
foreign languages at our
community events

Convenient location in
the middle of the City
of Melbourne


Contents

Mission Statement
Our Students
Life in Australia
Our Campus

General English Classes Overview
Class Structure
General English
Levels of General English Preparation
English for Academic Purposes

Language and Cultural Events
Get a Part Time Job in Melbourne
Popular Study to Work pathways
Life in Melbourne
Accommodation

How to Apply



Level Up English's
curriculum and **teachers**
immerse **students** in a
world of English both in
the classroom and **beyond**.
Take your **English** to the
next level.



Our Students

Our students come from all over the world and are focused on learning English. We only want students who really care about their study and want to dedicate most of their time to developing their skills.

In addition to the four hours of classes per day, we encourage all of our students to do their homework, attend language and culture focused social events every day from Monday to Friday. We also encourage students to get a part time job and join other groups relating to their interests.

Life in Australia

When you attend Level Up English you are walking into a community. Level Up isn't just a school, it's a lifestyle. You run social events every day with both local and international students. That includes events where you can meet people every day from Monday to Friday. Every week there are festivals and new things to do in Melbourne. We love Melbourne and want to show you how to make the most of your time here.

After developing better English you can take a certificate course with one of our partners and then you will have the language skills and the knowledge to do a number of part time jobs, and travel freely around the country as a tourist.

**20 Weeks
English Skills**



**Hospitality
Certificate**

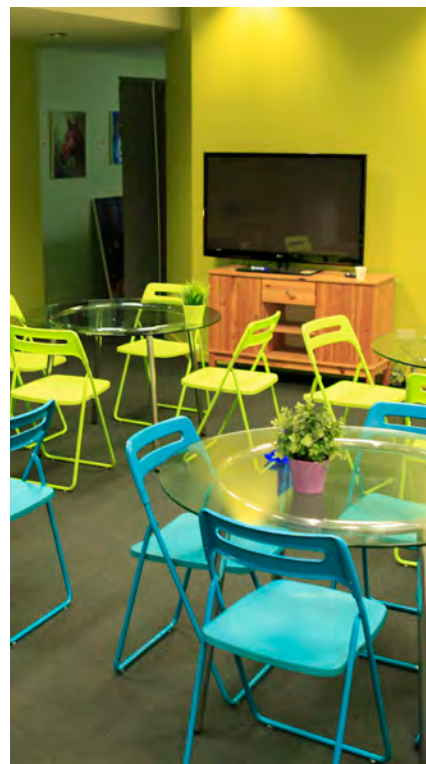


**Live in
Australia**



Our Campus

Welcome to our campus
located in the busy
centre of Melbourne



“All of our **teachers** have
learnt another foreign
language before. They **love**
international **cultures** and
understand the **challenges**”

Courses Overview

We have free language exchange and cultural events every evening, for all students.

**WORK
TRAVEL &
FURTHER STUDY**

ADVANCED

**UPPER-INTERMEDIATE
(APPLY EAP)**

**INTERMEDIATE
(APPLY IELTS)**

PRE-INTERMEDIATE

ELEMENTARY

Class Structure

	Monday	Tuesday	Wednesday	Thursday	Friday
8:30 - 1:00	General English - EAP				
1:30 - 6:00	General English - IELTS				
6:30-8:00	Events and Extra Classes				

Every week’s class includes:

- Clear grammar and vocabulary training
- A variety of learning activities for reading and listening
- Pair and group work for speaking and communication
- Student presentations
- Marked writing activities
- An excursion to a cultural attraction in Melbourne every Wednesday
- Weekly progress test every Friday

Our Classes

Flexible Study Schedule

Choose which days
you study! Balance
work and study!



Study 5 days a week (20 hrs)



Study 4 days a week (16 hrs)



Study 3 days a week (12 hrs)

Level Up English run a number of classes with the highest quality teachers, curriculum and textbooks. What sets us apart is that our teachers are all native speakers of English, but have also learnt a foreign language.

We have developed a curriculum that includes all four major areas of English language proficiency: Speaking, Listening, Reading and Writing. The textbooks are interesting, full of the most important grammar and vocabulary and really give you a way into the language.

Study, work and play! At Level Up English you can learn English at your own speed. You can enrol for 5, 4 or 3 days a week. You can decide which days you come. For example: Monday, Tuesday, Wednesday, and then you have a long weekend.

*for working holiday and tourist visa holders only

General English

There are many levels of English. Achieving an Upper Intermediate opens up a world of opportunities. That level allows you to study other subjects in English, enjoy English culture and work effectively in a part time job. If could only take 5 of 6 weeks, but if your English is not good to begin with then you can stay for up to 12 months.

Certificate:	Level Up Certificate of English
Duration:	1 - 50 weeks
Hours in class:	20, 16 or 12 hours per week
Levels:	Elementary, Pre-Intermediate, Intermediate, Upper Intermediate, Advanced
Class size:	Average of 12 students per class (max. 18)
Assessment:	Weekly tests + 1 oral presentation each level + Folio of writing pieces (one a week)
Course Entry:	Enter the class on any Monday of the year

Speaking



Develop the correct pronunciation, build your fluency and discuss many topics.

Reading



Improve your vocabulary and understanding of complex information and meaning.

Listening



Learn how to identify and find key-words in an article and understand the meaning.

Writing



Use correct grammar to express yourself in emails, short articles, essays and blogs.

The Levels of General English

English Level	CEFR Level*	Level Description
Elementary	A1	The most basic is Elementary for people who were not good at English in high school or who have only just started studying. The next levels increase in difficulty and include a lot of different grammar and vocabulary.
Pre-intermediate	A2	You can have some basic conversations about things you are familiar with such as study, family, hobbies and daily life. You can talk about the past and the future. You have a lot of adverbs such as 'quickly, slowly, finally'.
Intermediate	B1	You are developing vocabulary quickly about many topics and you can talk about conditionals and experiences in the past. You can understand passives but probably can't use them yet.
Upper-intermediate	B2	You can use a range of grammar confidently to talk about many subjects. It's becoming easier for you to have conversations with native speakers. You have enough to work well in a part-time job and develop meaningful relationships.
Advanced	C1	Express yourself with a variety of complex grammar and a high level of fluency. You can find the right word for the right situation and can communicate effectively in an office situation.

*CEFR - Common European Framework of Reference



Take your IELTS score
to the next level!

English for Academic Purposes (EAP)

Certificate:	Level Up Certificate of English for Academic Purposes
Duration:	15 weeks
Hours in class:	20 hours per week
Levels:	Upper Intermediate, Advanced
Class size:	Average of 12 students per class (max. 18)
Assessment:	Weekly tests + 1 oral presentation + weekly essay
Course Entry:	Enter the class on any Monday of the year

Getting a high score in your IELTS exam is essential for university entrance and migration. It is worth getting help from expert IELTS instructors to maximise your score.

Learn about how to:

- Prepare for speaking topics
- Improve fluency
- Avoid common pronunciation errors of speakers from your country
- Avoid common grammatical errors that examiners look for
- Recognise different types of Part 2 writing topics
- Develop ideas quickly and convincingly

As a part of the course we do full listening and reading test and then go through the answers one by one so that you understand why you got it wrong, and how to improve.

We do a full individual speaking test one on one for every student every 2nd Sunday. We do both a Part 1 and Part 2 each weekend.



English for Academic Purposes (EAP) is a preparation course for students wanting to take higher education in either Australia or another English speaking country. In the class we we cover a range of academic courses with a focus on writing. We do an essay every week both individually as well as in groups.

In this class you can:

- Improve writing skills
- Improve presentations
- Use academic vocabulary appropriately
- Use academic grammar such as passives

Make friends in Australia



Language and Cultural Events

Melbourne has language and cultural events every single day of the week. There are always new and exciting events to meet people from different backgrounds with different interests. We have connections with the language and culture groups in Melbourne where you can meet local Australian people who are interested in talking to international people and other international people from all over the world. The advantage of these events is that you can improve your speaking and listening fluency.

It doesn't matter where you are from, Melbourne is a diverse and multicultural city and we believe you will find your groove and friendship circle.

18:30 - 20:00	MON	TUE	WED	THU	FRI
Events	Language Exchange	Sports Club	International Party	Yoga & Meditation	Social Event
Extra Classes	Pronunciation	Language Exchange Club	Vocabulary	Grammar	Free Study

International Parties

There are a number of language exchanges where people from many language groups come to attend the event. They are often held at bars where people drink, chat and make new friends. They usually use flags to show which country people come from and which language they are learning. In general there are many people from different foreign countries but not as many local people.

The events are usually at a bar and are free to enter. You need to pay for anything that you want to eat or drink. But you can just drink water if you want. Get ready for a great night out and a chance to improve your speaking, listening and communication skills!



Language Exchanges



There are language exchanges, which usually meet in cafes or language schools for two languages to exchange. An example would be Japanese and English. For example at a Japanese and English language exchange, all members of the event are either Japanese people learning English, or they are Australian people who are learning Japanese. You can bring your grammar homework or some specific topics that you want to improve your vocabulary on. This is a great way to meet new friends who share your language interests!





**Communicate
with confidence**

Get a Part Time Job in Melbourne



Getting a part-time job often gives international students new working skills, and always helps boost speaking and listening proficiency as well as cultural knowledge.

Many part-time jobs are easy to get, but don't have a large degree of customer contact. We have vibrant cafes, restaurants and bars that are looking for professional staff.

We provide advice and recommendations about jobs to get in Melbourne. We also provide job skills classes and CV editing at any time during the week. You can get the skills to work in hospitality as well as other areas.

You can learn about:

- Communication in an English speaking office or workplace
- How to succeed in an interview
- Where to develop the practical skills e.g. barista course



Further Study in Melbourne

After you finish our General English course you will be ready to study any topic of your choice in English. You might want to study Accounting, Finance, Management or more applied skills like tourism and hospitality. We provide career advice for all of our students and can recommend other colleges that we have a relationship with. For many courses, if you have finished our 10-week Upper Intermediate course then you can enter directly into our partner institution.

Popular Pathways

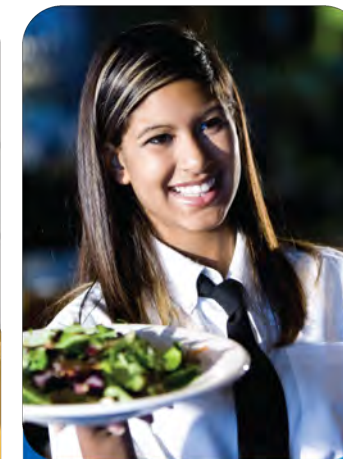
Begin your Australian Experience with Level Up English!
Before you take the certification course you need to develop your English skills and cultural knowledge.
Here are some of the common study to work pathways:



10 weeks english
+
Responsible
Service of Alcohol
(RSA)
=
bartender in the
restaurant.



10 weeks english
+
Barista
Course
=
Work in Cafe



20 weeks english
+
Information
Technology
Certificate IV
=
Work with computer



20 weeks english
+
10 Weeks IELTS
+
IELTS Test
=
Diploma/University
Study



Life in Melbourne



See a concert at Rod Laver Arena



Why Melbourne is a great city

- A relaxing café culture atmosphere
- European influenced buildings as well as modern streets
- Low crime rate and honest people
- Living expenses are reasonable
- High quality public transport as well as Uber drivers
- Lots of parks to run, play sports like basketball
- So many clubs and associations to follow your passion



See Melbourne at night



Try a pizza in Lygon Street



Enjoy Melbourne Coffee



Go on a day trip to Great Ocean Road



Swim at St. Kilda Beach



Attend Australian Open



Staying in Australia

Accommodation

To immerse yourself in the local culture, the best thing to do is live with local people.

You can either search for sharehouses through flatmates.com.au or you can apply for a homestay. Our admin staff can help you with both of these and give you some tips for living with local people.

HOMESTAYS

- Live with a family and experience Australian life
- Have nutritious healthy meals
- Live in the suburbs
- Practice your English everyday

LIVING IN A SHAREHOUSE

- Communicate with your housemates about daily activities such as cooking and shopping
- Go out together for coffee, dinner or a party
- Find out about the popular places to go in Melbourne
- Have your own room or share a room

STUDENT ACCOMMODATION

- Have your own apartment
- Live in the city and reduce travel time
- Meet other students from other schools

YOUTH HOSTEL

- Save money by staying with many others
- Meet a variety of people from different countries
- Live in the city and reduce travel time
- Perfect for short stays in Melbourne

How to Apply

Apply Online
levelupenglish.com.au



Offer Letter
We will let you know if you have
been accepted



Documents & Payment
Upload passport photo and transfer
tuition to confirm your enrollment

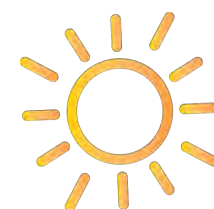


Confirmation
We will confirm your your full
enrollment



**START YOUR
CLASSES**

Flexible Study Options



Morning Classes

Revise, exercise or work in the
afternoons and evenings



Afternoon Classes

Revise and exercise or work in
the mornings before class



Weekend IELTS

Get ready for your upcoming exam
Classes are from 9 - 1pm on
Saturday and Sunday
3 - 6 hours of tuition in small
classes per week



Study 5 days a week

20 hours - 4 hours a day Mon- Fri
Full enrollment



Study 4 Days a Week

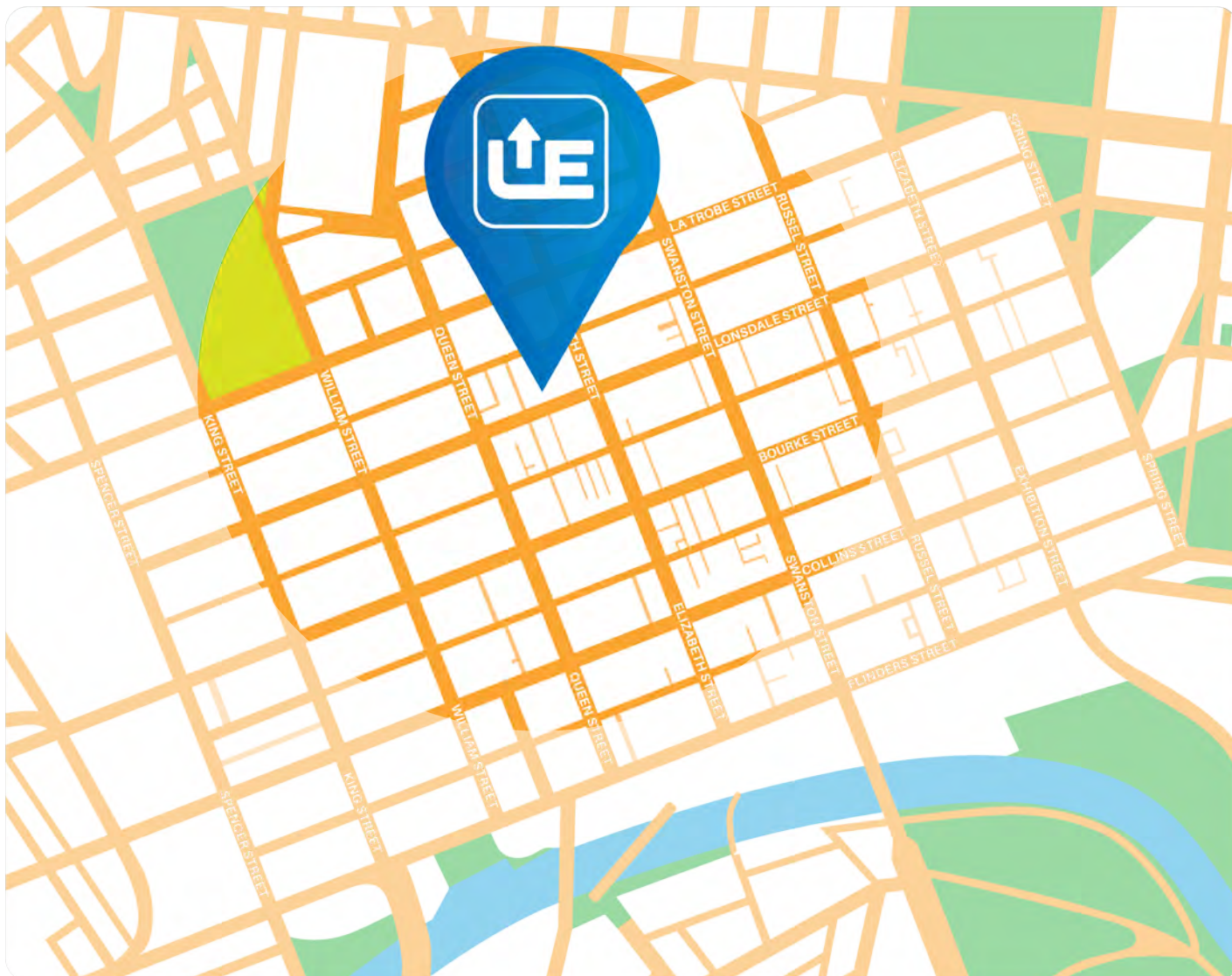
16 hours - 4 hours a day
Choose your schedule



Study 3 days a week

12 hours - 4 hours a day
Choose your schedule

Contact Us



☎ +61 3 9016 0595

✉ info@levelupenglish.com.au

🖱 www.levelupenglish.com.au

📍 Level 1, 364-372 Lonsdale St, Melbourne VIC 3000

 @LevelUpAU

 ID: level-up-english

 ID: levelupenglish

 ID: levelupenglish